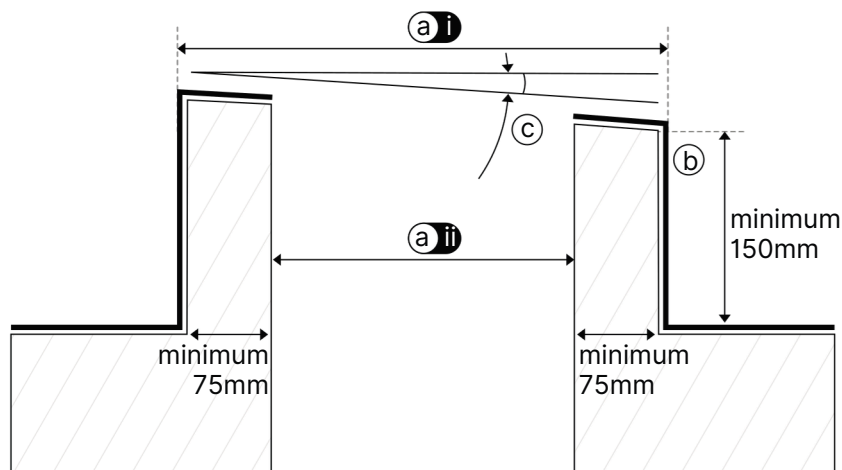


Flat Glass

TB402

Manual Opening Flat Glass Rooflight Builders upstand and pitch requirements

Upstand and pitch requirements



- ① Finished insulated and weathered upstand dimensions:
i - External upstand = Nominal Rooflight size (+40/-20mm)
ii - Internal upstand = Nominal Rooflight size - 150mm (+30/-0mm)

Insulated upstand must be within tolerance stated otherwise worm drive will clash with upstand

- ② Roof covering should cover side and top of insulated upstand in accordance with manufacturer's installation recommendations.
NB there should be no excessive build up of layers. The top surface should be level and free from protrusions or projections.

- ③ The rooflight must be mounted at a minimum pitch (dependent on size, shown below) to ensure adequate water runoff. If the roof fall is less than required then the upstand itself should be built with a pitch.

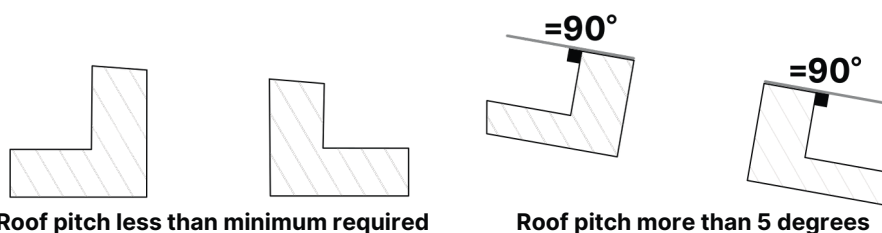
Flat Glass units are suitable for mounting at pitches of 2°-15°.

A minimum pitch of 2° or 4° is required to prevent water ponding on the glass leading to rapid dirt build up. See matrix for minimum pitch according to size.

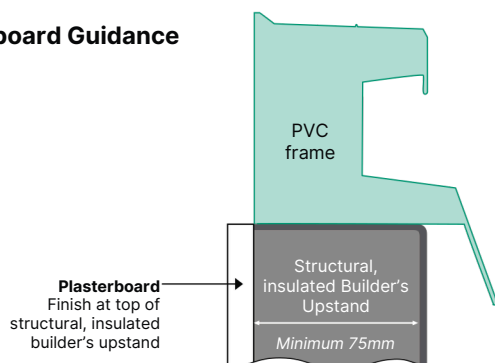
		Unit Length																		
Unit Width		600	750	900	1000	1050	1200	1350	1500	1650	1800	1950	2000	2100	2250	2400	2550	2700	2850	3000
	600	2°	2°	2°	2°	2°	2°	2°	2°	2°	2°	2°	2°	2°	2°	2°	2°	2°	2°	2°
	750		2°	2°	2°	2°	2°	2°	2°	2°	2°	2°	2°	2°	2°	2°	2°	2°	2°	2°
	900			2°	2°	2°	2°	2°	2°	2°	2°	2°	2°	2°	2°	2°	2°	4°	4°	4°
	1000				2°	2°	2°	2°	2°	2°	2°	2°	2°	2°	2°	4°	4°	4°	4°	4°
	1050					2°	2°	2°	2°	2°	2°	2°	2°	2°	2°	4°	4°	4°	4°	4°
	1200						2°	2°	2°	2°	2°	2°	4°	4°	4°	4°	4°	4°	4°	4°
	1350							2°	2°	2°	2°	2°	4°	4°	4°	4°	4°	4°	4°	4°
	1500								4°	4°	4°	4°	4°	4°	4°	4°	4°	4°	4°	4°
	1650									4°	4°	4°	4°	4°	4°	4°	4°	4°	4°	4°
1800										4°	4°	4°	4°							
1950											4°	4°								
2000												4°								

For finished roof pitches that are less than the minimum needed then the pitch can be built into the upstand.

If finished roof pitch is greater than 5 degrees then the top of the upstand must be perpendicular to the sides and parallel with the roof surface.



Plasterboard Guidance



Finish plasterboard at the top of the structural, insulated builder's upstand. Do not cover any of the PVC frame. For more information see TB409.

Annealed, laminated inner pane

These Flat Glass rooflights are manufactured using double glazing which includes an inner pane of annealed, laminated safety glass, which prevents falling glass in the event of accidental breakage, for the safety of those below the rooflight.

In some circumstances, annealed, laminated safety glass can be subject to thermal stress fracture in the event of uneven heat build-up directly under the glass. Installation of blinds, or any other alterations made to the lightwell below the rooflight, must be done so with consideration to the risk of thermal stress fracture. In the case of blinds, the risk of thermal stress fracture can never be fully removed, but it can be reduced by choosing light coloured blinds, positioning them as far away from the glass as possible, and including ventilation in the rooflight specification.



More detailed guidance can be obtained upon request.




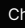
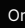
① TECHNICAL SUPPORT: For any technical information/queries please contact your supplier.

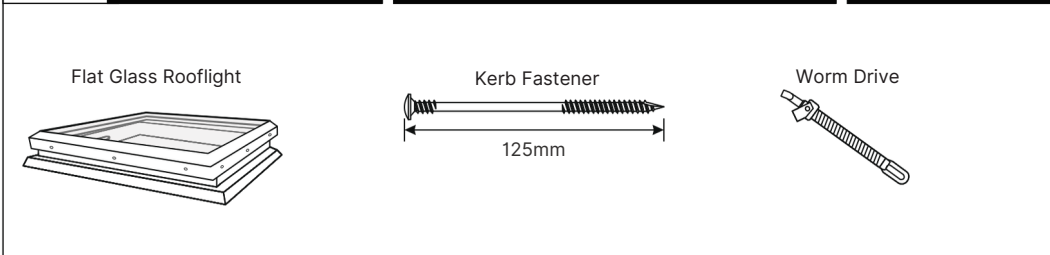
The manufacturer operates a policy of continuous product improvement, and reserves the right to alter specifications at any time without notice. Every effort has been taken to ensure all details contained in this document are correct at the time of going to press but this document should be used only as a guide and does not in any way form part of a contract or warranty. It is the customer's responsibility to ensure that the product is suitable for the actual conditions of use, which are beyond the control of the manufacturer.

Flat Glass

TB402

Manual Opening Flat Glass Rooflight on builders upstand

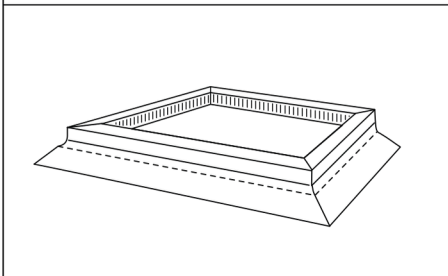
Contents  Take care when unpacking  Check all correct parts are included and undamaged  Only use fixings supplied



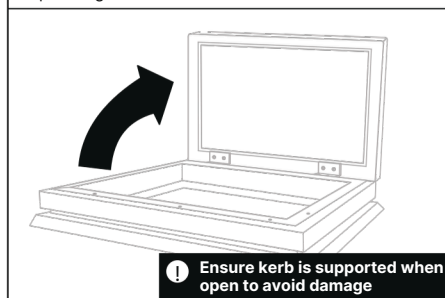
Kerb	Fixing Quantities
Length of Nominal Unit Side (mm)	Number of fixings per side
750 and under	2
751 to 1200	3
1201 to 1650	4
1651 to 1950	5
1951 to 2250	6
2251 to 3000	7


 All Health & Safety Regulations must be followed on site throughout the installation process

1 Prepare upstand in accordance with requirements on page 1

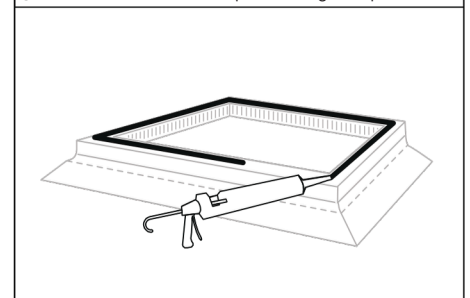


2 Open hinged frame

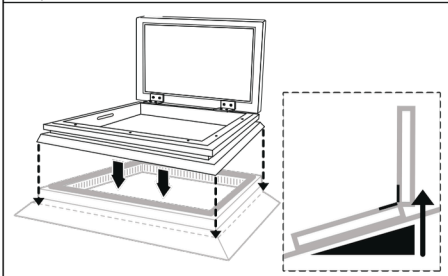


 **WARNING!** Flat glass units are heavy. Some units may require a mechanical lift.

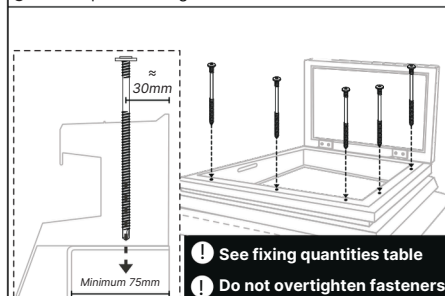
3 Mastic/Silicone around top inside edge of upstand



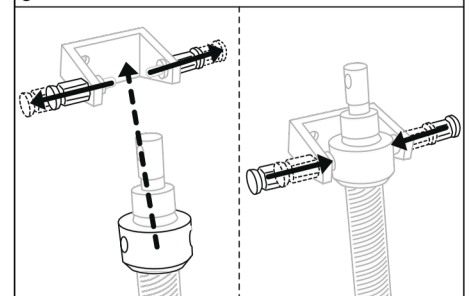
4 Facing hinges upslope, place kerb squarely onto upstand



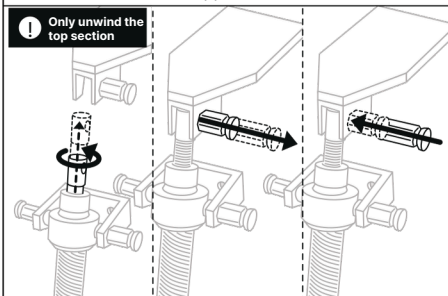
5 Fix to upstand using 125mm kerb fasteners



6 Attach worm drive to lower bracket on kerb



7 Attach worm drive to upper bracket



 **TECHNICAL SUPPORT:** For any technical information/queries please contact your supplier.

The manufacturer operates a policy of continuous product improvement, and reserves the right to alter specifications at any time without notice. Every effort has been taken to ensure all details contained in this document are correct at the time of going to press but this document should be used only as a guide and does not in any way form part of a contract or warranty. It is the customer's responsibility to ensure that the product is suitable for the actual conditions of use, which are beyond the control of the manufacturer.

**SCAN FOR
INSTALLATION
VIDEO**

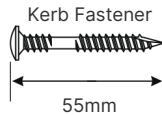
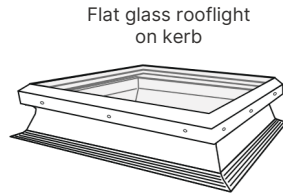


Flat Glass

TB402

Manual Opening Flat Glass Rooflight on PVC kerb

Contents **!** Take care when unpacking **Check all correct parts are included and undamaged** **Only use fixings supplied**



Kerb	Fixing Quantities
Length of Nominal Unit Side (mm)	Number of fixings per side
750 and under	2
751 to 1200	3
1201 to 1650	4
1651 to 1950	5
1951 to 2250	6
2251 to 3000	7

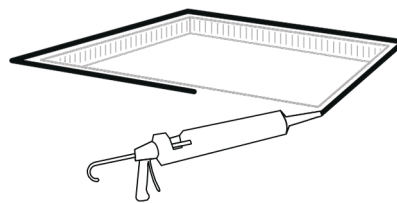
! All Health & Safety Regulations must be followed on site throughout the installation process

1 Unit pitch

See page 1 for minimum roof pitch requirements.

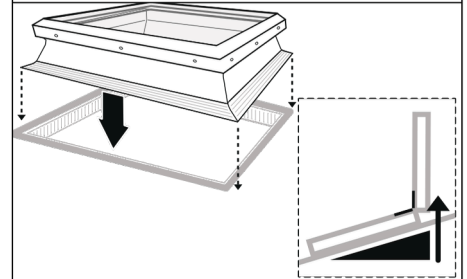
If roof pitch is less than the minimum required then furring strips should be used to ensure unit is installed with adequate pitch.

1 Mastic/Silicone around the edge of the roof opening

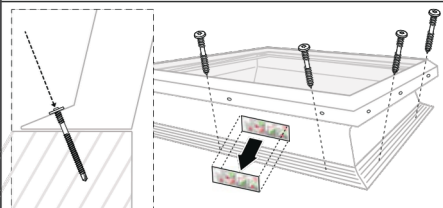


! **WARNING! Flat glass units are heavy. Some units may require a mechanical lift.**

2 Facing hinges upslope, place kerb squarely over roof opening

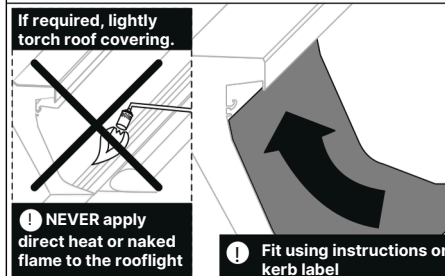


3 Fix kerb to roof using 55mm kerb fasteners Remove and retain label

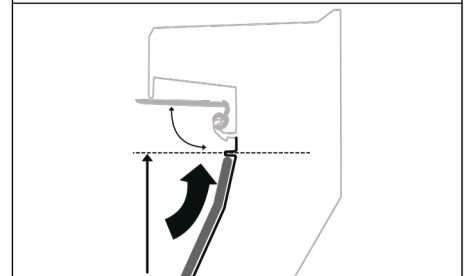


- !** See fixing quantities table
- !** Do not overtighten fasteners

4 Install roof covering according to manufacturer's installation recommendations



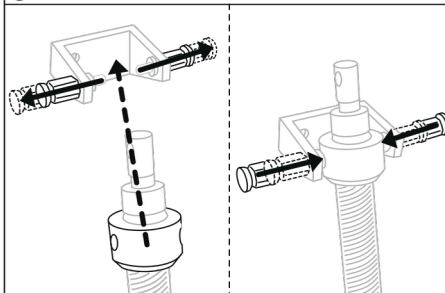
5 Terminate roof covering in accordance with instructions on retained kerb label



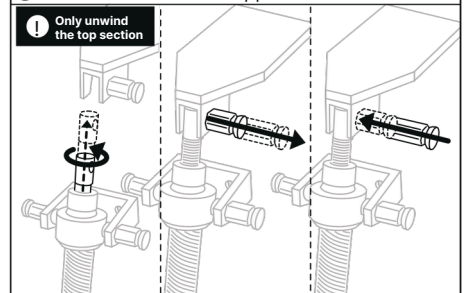
Product is supplied assembled and locked shut.

The following is for information only.

i Attach worm drive to lower bracket on kerb



i Attach worm drive to upper bracket



! **TECHNICAL SUPPORT:** For any technical information/queries please contact your supplier.

The manufacturer operates a policy of continuous product improvement, and reserves the right to alter specifications at any time without notice. Every effort has been taken to ensure all details contained in this document are correct at the time of going to press but this document should be used only as a guide and does not in any way form part of a contract or warranty. It is the customer's responsibility to ensure that the product is suitable for the actual conditions of use, which are beyond the control of the manufacturer.

**SCAN FOR
INSTALLATION
VIDEO**

